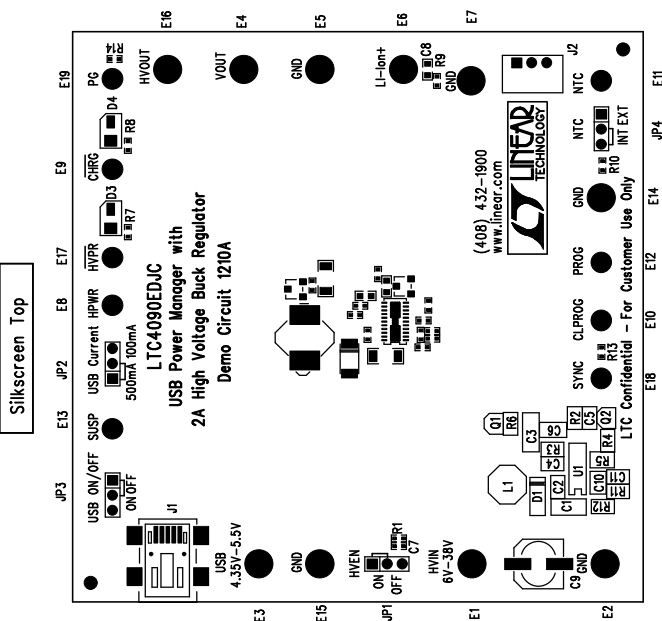


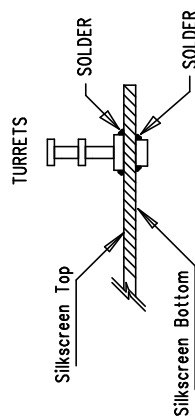
Silkscreen Top



## Assembly Top Drawing

**NOTES : Unless Otherwise Specified**

1. BREAK BOARDS FROM THE PANEL WHEN ASSEMBLY IS COMPLETE.
2. OPTIONAL COMPONENTS ARE UNSTUFFED AND SHOULD BE COVER WITH SOLDER AFTER ASSEMBLY. (NO EXPOSED PADS)
3. JUMPER SHUNTS INSTALLATION: JP1-ON, JP2-500mA, JP3-OFF, JP4-INT
4. INSTALL TURRETS



## APPROVALS

	INIT	DATE
DRAWN		
CHECK		
DESIGN	Antonina K	
ENGR	Toge B	
SCALE = NONE		

SCALE = NONE



**LINEAR**  
TECHNOLOGY

**TITLE: LTC4090EDJC**

## USB Power Manager with 2A High Voltage Buck Regulator

SIZE	Demo Circuit 1210A	REV. 2
NONE		

DES-230730

**SHT 1 of 1**